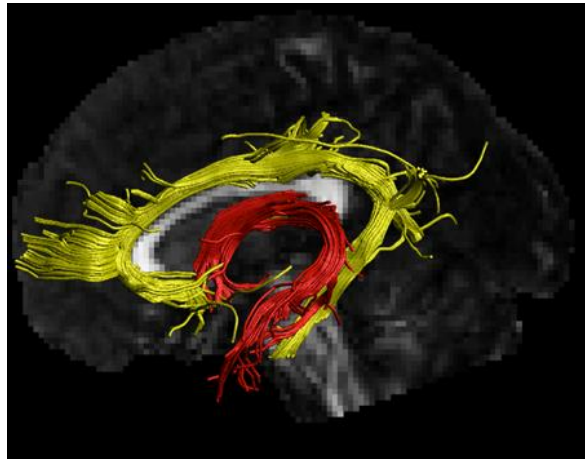


# Volunteers needed for research into midlife risk of dementia

If you are between 40-70 years, a native English speaker and in good health (no history of psychiatric, neurological, chronic immune system conditions; head injury, alcohol or drug abuse; metal in your body; have normal or corrected-to-normal vision), then we would like to invite you to 2 inter-related studies investigating factors that affect brain health and cognition.

## *What do WE ask?*

MRI Brain scan (1.5 hour)	Saliva & blood samples (DNA & biomarkers)
2 Mental function testing sessions (2 hours each)	Health measures (weight, blood pressure)
Questionnaires (completed at home)	



Please contact: [healthyageing@cardiff.ac.uk](mailto:healthyageing@cardiff.ac.uk)

**What do YOU get? Up to £60!**

## *Where?*

Cardiff University Brain Research Imaging Centre (CUBRIC),  
Cardiff, CF10 3AT